



LaserMethane **SMART**

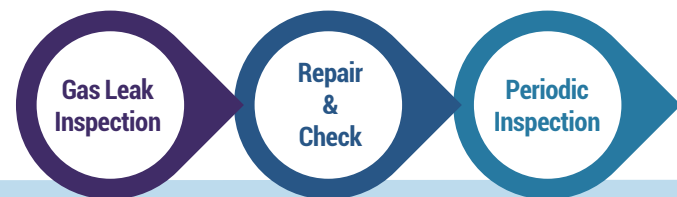
CREATE PERSUASIVE EVIDENCE

Model No.
LMB2B3E-SBA
LMB2B3E-SNA

- High definition digital camera provides images of inspection points with measured values on 2.7" display.
- Removeable SD card to download and store data or use Bluetooth option to upload image, data and time stamp to the cloud (model LMB2B3E-SBA).
- Compatible with Android and IOS devices!
- Operates on readily available rechargeable commercial AA batteries.
- Reliable: self-check and automatic calibration on start-up ensures accurate survey.
- Remote detection from 98'+ distance for safe inspections.

Features of devices with Bluetooth (Version : LMB2B3E-SBA)

Allow users to manage the Entire Maintenance Process.



Find Gas Leak

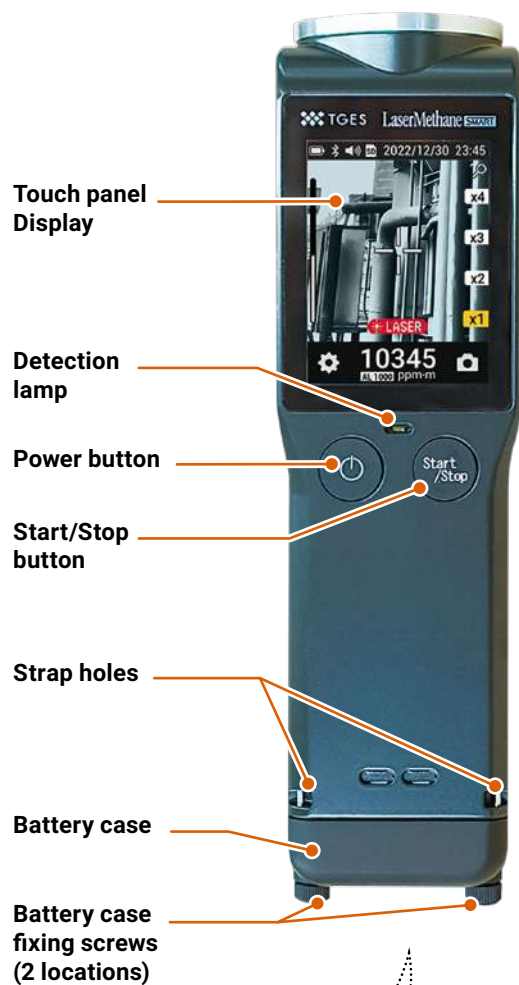
Create Reliable Inspection Records

Store Evidence on Cloud Server

New Product & Service



Main Specifications



ITEMS	SPECIFICATIONS
Model LMB2B3E-SBA	Bluetooth enables data storage via communication with the cloud
Model LMB2B3E-SNA	No Bluetooth
Target gas	Methane(CH4) Methane containing gases (e.g. natural gas)
Unit	ppm×m
Detection limits	1~50,000 ppm×m
Detection accuracy	±10% at 100,1000 ppm×m (distance 6.5')
Detection response time	0.1 second
Detection distance	0 ~ 98.4 ft.
Power supply	Designation batteries (AA Ni-MH Battery) Panasonic Corporation: eneloop, eneloop pro, eneloop lite*
Continuous operating time	Full operation (@ 25°C) : 2.5 hours Battery : Panasonic eneloop used (Panasonic "eneloop Pro" is 3.5 hours)
Laser safety	IEC60825-1:2014 Guide laser beam (green) Output level : 5mW (Class 3R) Below Measuring laser beam Output level : 10mW (Class1) Below • Do not look into the laser beam.
Explosion proof standard	⊕ II 3 (1) G EX ic [op is Ga] II A T4 Gc ATEX : EN60079-0, -11, -28 IECEx : IEC60079-0, -11, -28
Protection class	Dust and drip proof construction (IP54 equivalent)
Environmental conditions	Operating temperature range : 1°F ~ 122°F Operating humidity range : 30~90% (No condensation)
Dimensions and weight	Dimensions: 2.2" (W) × 7.9" (H) × 2.1" (D) Weight: 17.6 oz When 4 batteries (eneloop) are installed
Measurement data storage	Recorded on an installed microSD card (capacity 16 Gb).

Labels



* Batteries are not included with this device. Four batteries are required and must be supplied by the user.



More Information & Sales:
LMM@SAFETYSCANUSA.COM